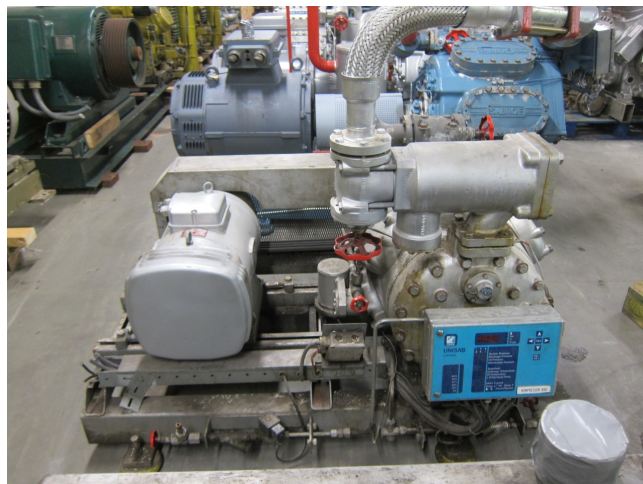


Sabroe CMO 26

Specifications

Brand	Sabroe
Type	CMO 26
Refrigerant	Freon
kW at +10°C/+40°C	155,7
kW at 0°C/+40°C	106,1
kW at -5°C/+40°C	86
kW at -10°C/+40°C	68,6
kW at -20°C/+40°C	41,3
kW at -30°C/+40°C	22,1
kW at -40°C/+40°C	9,3
Electromotor Specs	30
Unloaded Start	✓
Capacity Control	✓
On steel base frame	✓
Oil level system AC&R	✓
Control panel	✓
Remarks	# // Electromotor: 30 kW at 1445 RPM // Pulley EM: 260 / Pulley Compr: 260
Remarks	R404a - R22 or other freon types
Package / Rack	✓
Sizes	1400x950x1250 mm (LxWxH)
Stock	1



Description

Used Sabroe CMO 26

Used Sabroe CMO 26 freon compressor, complete with unloaded start, capacity control, oil level system and control panel. This unit has a cooling capacity of 155,7 kW at +10°C/+40°C.

Why choose for HOSBV? Were not only the largest used refrigeration specialist in Europe, but also, we deliver all equipment including an extensive test, warranty and deliver after an industrial cleaning. *If requested we are happy to arrange your logistics.



